

JALKARUUVI

teräs sinkitty
torx



| | |
|-----------|---|
| M 6 x 50 | • |
| M 6 x 60 | • |
| M 6 x 70 | • |
| M 8 x 70 | • |
| M 8 x 80 | • |
| M 8 x 100 | • |

KALUSTERUUVIT

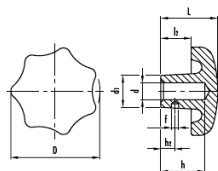

puukierre, 4 mm kuusiokolo, messingöity

| | |
|----------|---|
| 6,3 x 40 | • |
| 6,3 x 50 | • |
| 6,3 x 60 | • |
| 6,3 x 70 | • |
| 6,3 x 80 | • |



metrinen kierre, 4 mm kuusiokolo, messingöity

| | |
|-----------|---|
| M 6 x 20 | • |
| M 6 x 25 | • |
| M 6 x 30 | • |
| M 6 x 40 | • |
| M 6 x 50 | • |
| M 6 x 55 | • |
| M 6 x 60 | • |
| M 6 x 70 | • |
| M 6 x 80 | • |
| M 6 x 100 | • |

TÄHTINUPPI
DIN 6336
fenolipuristemassa musta


| | H | h1 | h2 | d1 | |
|-----------------|----|------|----|----|---|
| TN 32 M 6 | 20 | 13,5 | 10 | 14 | • |
| TN 32 M 6 X 20 | | | | | • |
| TN 32 M 8 | 25 | 16 | 12 | 16 | • |
| TN 32 M 8 X 20 | | | | | • |
| TN 32 M 8 X 25 | | | | | • |
| TN 32 M 10 | 32 | 21 | 16 | 21 | • |
| TN 32 M 10 X 20 | | | | | • |
| TN 32 M 10 X 35 | | | | | • |
| TN 32 M 12 | 40 | 25 | 19 | 23 | • |

PALLONUPPI
DIN 319 C
fenolipuristemassa, musta

| | d | H | h1 | |
|----------------|----|----|------|---|
| P 16 M 4 | 8 | 15 | 7,5 | • |
| P 20 M 5 | 12 | 18 | 10,5 | • |
| P 32 M 6, M8 | 18 | 29 | 16 | • |
| P 40 M 10 M 12 | 22 | 37 | 21 | • |

VÄÄNNIN
**kuusioreijällä, erikoismuovi,
valkoinen ja musta**


| | | | | | |
|-----|----|----|---|-----|---|
| M 4 | 25 | 8 | 3 | 3,5 | • |
| M 6 | 32 | 11 | 4 | 5 | • |